



Fort Madison Industrial Site consists of 128 acres located in Fort Madison, Iowa. Fort Madison Industrial Site has access to the BNSF Railway network and has received certification as part of BNSF's Site Certification program. BNSF certification ensures a site is ready for rapid acquisition and development through a comprehensive evaluation of existing and projected infrastructure, environmental and geotechnical standards, utility evaluation and site availability.

**SELECTING A CERTIFIED SITE CAN:**

- Reduce development time
- Increase speed to market
- Reduce upfront development risk of rail-served industrial sites

**PROPERTY DETAILS**

The Fort Madison Industrial Site is located off 4-lane US Highway 61 and is less than 10 miles from the US Hwy 27/218 Avenue of the Saints in a heavily industrial area of food grade, alternative energy and foundry facilities and qualifies for New Market Tax Credits and is in an Opportunity Zone. This development-ready site is also certified by the Iowa Economic Development Authority Certified Sites program.

**Site Details:**

- 128 acres/100 contiguous acres available for development
- Direct access to BNSF
- Site is identified as a future economic development growth area for industry in the Fort Madison, IA Strategic Plan



**CONTACT INFORMATION**

BNSF Regional Manager

**Anne Erthal**

312.850.5699

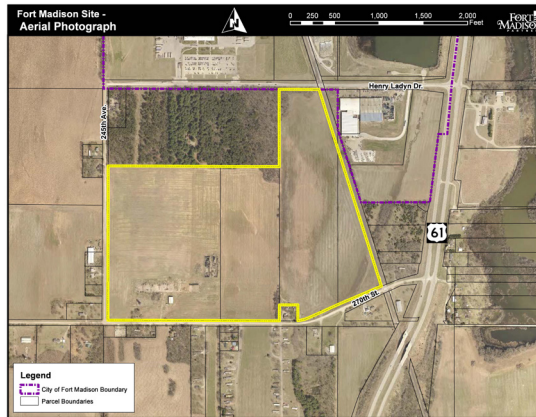
anne.erthal@bnsf.com

Lee County Economic Development Group  
Dir of Economic Development

**Tim Gobble**

319.463.9030

tgobble@leecountyedg.com



## SITE PROFILE

<b>Land Area</b>	128 acres/100 contiguous acres
<b>Zoning</b>	Currently in county authority- no zoning. For City incentives, will need to be annexed into the City- all applications can be stacked to happen simultaneously as voluntary annexation- potentially 90 days.
<b>Price</b>	\$12,000 per acre

## UTILITIES

<b>Electric</b>	Alliant Energy
<b>Gas</b>	MidAmerican Energy
<b>Water</b>	City of Fort Madison
<b>Wastewater</b>	City of Fort Madison
<b>Telecommunications</b>	iConnectYou

## DEMOGRAPHICS

Fort Madison is a community located in Lee County in the southeast corner of Iowa. As of the 2020 census, the population of Fort Madison, IA was 10,270 with a laborshed area of over 40 miles.

## POPULATION

<b>Fort Madison</b>	10,270
<b>5 mile radius</b>	3,511
<b>10 mile radius</b>	21,382
<b>15 mile radius</b>	41,548
<b>20 mile radius</b>	53,540

## WORKFORCE

<b>Laborshed Area</b>	+40 miles
<b>Total Employment</b>	88,620
<b>Median Household Income</b>	\$55,200

## BNSF PREMIER PARKS, SITES AND TRANSLOAD PROGRAM

BNSF Certified Sites are a part of the Premier Parks, Sites and Transload program which is a strategic approach to addressing the increasing demand for customer site locations by developing various types of facilities across the BNSF network. BNSF Certified Sites have been reviewed by an industry expert in order to ensure accurate, reliable data. Our goal is to provide an inventory of rail-served sites that are available for immediate development.\*

\* In order to ensure a safe, efficient and economical switch operation, BNSF will want to review and approve the engineering plans to serve each tenant facility.

For more information on BNSF's Certified Sites Program, please visit [www.bnsf.com/rail-development](http://www.bnsf.com/rail-development) or call 817.867.0183.

