



The City of Clovis Industrial Park is a 240-acre site located in Curry County, New Mexico just south of Clovis, NM. The industrial park has access to BNSF Railway and has received certification as part of BNSF Railway's Site Certification program. BNSF certification ensures a site is ready for rapid acquisition and development through a comprehensive evaluation of existing and projected infrastructure, environmental and geotechnical standards, utility evaluation and site availability.

SELECTING A CERTIFIED SITE CAN:

- Reduce development time
- Increase speed to market
- Reduce upfront development risk of rail-served industrial sites

PROPERTY DETAILS

The City of Clovis Industrial Park is a 240-acre site located in East-Central New Mexico. The site is located adjacent to US 60, 70, and 84 east and the Tuck Bypass. The site is zoned heavy industrial and is bordered to the west by BNSF Railway. The site contains approximately 240 acres of industrial property and is currently subdivided into 25 lots, ranging in size from 5 to 20 acres with the option to combine as needed.



Site Details:

- 240 acres available for development
- Direct access to BNSF Railway
- Available for Industrial Development

CONTACT INFORMATION

BNSF Regional Manager

Maksim Yashirin

928-289-7230

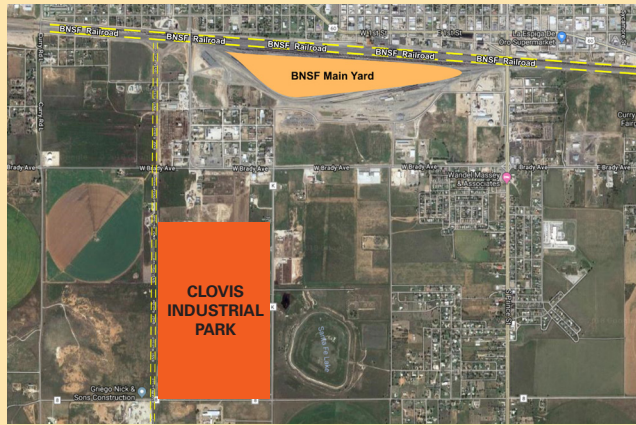
Maksim.Yashirin@bnsf.com

Clovis Industrial Development Corporation

Ernie Kos

575.763.6600

Ernie@ClovisNM.org



SITE PROFILE

Land Area	240 acres
Zoning	Not subject to zoning requirements
Price	\$20,000/acre (negotiable)



UTILITIES

Electric	Xcel Energy
Gas	New Mexico Gas Company
Water	City of Clovis
Wastewater	City of Clovis
Telecommunications	Plateau



DEMOGRAPHICS

Clovis is a community in Curry County New Mexico. As of the 2010 census, the population was 37,775. The Clovis-Portales combined MSA has a total of 67,000 citizens.



POPULATION

City of Clovis	
5 mile radius	40,804
10 mile radius	46,290
15 mile radius	56,355
20 mile radius	67,658



WORKFORCE

City of Clovis	
Total Employment	18,761
Annual Avg. Wage	\$55,174/year

BNSF PREMIER PARKS, SITES AND TRANSLOAD PROGRAM

BNSF Certified Sites are a part of the Premier Parks, Sites and Transload program which is a strategic approach to addressing the increasing demand for customer site locations by developing various types of facilities across the BNSF network. BNSF Certified Sites have been reviewed by an industry expert in order to ensure accurate, reliable data. Our goal is to provide an inventory of rail-served sites that are available for immediate development.*

* In order to ensure a safe, efficient and economical switch operation, BNSF will want to review and approve the engineering plans to serve each tenant facility.

For more information on BNSF's Certified Sites Program, please visit www.bnsf.com/rail-development or call 817.867.0183.

